



# SERVICES & SOLUTIONS

Empowering Telecom Networks Through GIS Innovation





# ABOUT TEKLABZ

At Teklabz, we believe that strong networks start with strong intelligence.

Founded in 2009, Teklabz is a leading provider of professional GIS services, specializing in delivering Esri-based solutions tailored for Communication Service Providers. With more than 25 certified GIS experts across Jordan and Oman, we empower telecom operators to digitize, optimize, and future-proof their network infrastructure.

Our expertise spans across the ArcGIS platform, and our strategic partnerships — as an Esri Global Partner and an Ericsson PNI Implementation Partner — position us at the forefront of telecom network transformation.



## OUR MISSION:

TEKLABZ's mission is to redefine how businesses manage geospatial information and networks.

By simplifying network management and driving digital transformation, we deliver innovative, client-focused solutions that empower businesses to operate efficiently and make smarter decisions.

Leveraging cutting-edge technology and a deep understanding of client challenges, we ensure precise, impactful solutions that navigate the complexities of the digital age.



# HOW WE WORK

## OUR CORE APPROACH

We don't just deliver software solutions. We design comprehensive, scalable systems that tackle real-world telecom challenges head-on.

## BUILT FOR TELECOMS

Telecom infrastructure is unique — and so are our solutions.  
We specialize exclusively in network-centric GIS innovation.

## CLIENT-CENTRIC DESIGN

Every solution we build is tailored around your operational needs, not around a one-size-fits-all model.

## END-TO-END TRANSFORMATION

From network design to field validation, from legacy data migration to analytics — we cover the full network lifecycle.

## QUALITY WITHOUT COMPROMISE

Our certified engineers and Esri-accredited services ensure every project meets global standards of excellence.

**“ WE DELIVER INNOVATIVE, CLIENT-FOCUSED SOLUTIONS THAT EMPOWER BUSINESSES TO OPERATE EFFICIENTLY AND MAKE SMARTER DECISIONS. ”**

# CLIENT-CENTRIC DIGITAL SOLUTIONS

## OVERVIEW

Every telecom operator faces unique operational challenges. We develop tailor-made digital applications and automation solutions that fit your workflows precisely — no compromise, no unnecessary complexity.

### CLIENT PAIN POINTS

- Reliance on manual processes
- Disconnected internal systems
- Long operational cycles

### OUR SOLUTION

- Analyze your business processes for automation opportunities
- Develop custom-built, Esri-based applications
- Integrate GIS seamlessly with OSS/BSS, CRM, and other critical systems

### DELIVERABLES

- Bespoke automation tools
- Seamless process integration
- Improved operational visibility

### BUSINESS IMPACT

- Faster service delivery
- Higher operational efficiency
- Greater scalability and innovation potential



# NETWORK PLANNING AND DESIGN SERVICE

## OVERVIEW

Networks are only as strong as the plans behind them. Teklabz offers comprehensive planning, simulation, and design services that ensure your networks are optimized for today — and ready for tomorrow.

### CLIENT PAIN POINTS

- Inaccurate demand forecasting
- Inefficient manual network design
- Costly errors in field deployment

### OUR SOLUTION

- Advanced network capacity modeling
- Predictive simulations for network expansions
- Automated, GIS-based design documentation and BOM/BOQ generation

### DELIVERABLES

- Optimized, ready-to-deploy network designs
- Full network simulation reports
- Automation of design workflows

### BUSINESS IMPACT

- Reduced design and deployment timelines
- Lower capital and operational expenditure
- Enhanced network reliability and scalability



# FIELD DATA COLLECTION & VERIFICATION SERVICES

## OVERVIEW

Your network is only as accurate as the data behind it. Teklabz empowers your field teams with real-time GIS-enabled tools, ensuring every survey, inspection, and verification is captured with precision — and connected directly to your network records.



### CLIENT PAIN POINTS

- Inaccurate or outdated field data
- Gaps between planned designs and real-world installations
- High cost of repeated field visits

### OUR SOLUTION

- Deploy mobile GIS applications for real-time field data collection
- Enable instant verification of installed network assets
- Automate the synchronization of field data with network systems

### DELIVERABLES

- Comprehensive, geo-tagged field survey datasets
- Verified design-to-installation reports
- Live updates to GIS network databases

### BUSINESS IMPACT

- Improved network accuracy and reliability
- Faster field operations with fewer errors
- Reduced operational costs and downtime



# NETWORK DATA CONVERSION & MIGRATION SOLUTIONS

## OVERVIEW

Legacy systems shouldn't hold your network back. Teklabz helps telecom operators transition seamlessly to Esri's modern Utility Network environment — ensuring your data is clean, accurate, and fully operational in the digital age.

### CLIENT PAIN POINTS

- Disparate legacy systems hindering innovation
- Risk of data loss during migration
- Limited in-house expertise for complex GIS transitions

### OUR SOLUTION

- Comprehensive data auditing and cleansing
- Data transformation aligned with Utility Network models
- Secure, phased migration plans minimizing operational risk

### DELIVERABLES

- Fully validated GIS network databases
- Detailed migration and transformation documentation
- Post-migration performance validation reports

### BUSINESS IMPACT

- Zero disruption to critical operations
- Future-proofed network data architecture
- Greater agility for network upgrades and expansions



# ADVANCED DATA ANALYTICS & INSIGHTS

## OVERVIEW

In today’s telecom landscape, raw data isn’t enough — you need intelligence. Teklabz transforms your GIS and network data into predictive, real-time insights that guide better planning, faster decision-making, and proactive network management.

### CLIENT PAIN POINTS

- Difficulty turning data into actionable insights
- Missed opportunities for network optimization
- Lack of real-time network visibility

### OUR SOLUTION

- Develop interactive GIS dashboards tailored to your KPIs
- Deploy predictive analytics models for expansion and upgrade planning
- Customize reporting frameworks for operational and executive needs

### DELIVERABLES

- Interactive, real-time network dashboards
- Predictive models for demand forecasting and service improvement
- Comprehensive performance and operations reports

### BUSINESS IMPACT

- Smarter, faster decision-making
- Optimized resource allocation and investment planning
- Improved service quality and customer experience



# TELCO NETWORK MANAGER

## OVERVIEW

Manage your network like never before. The Teklabz Telco Network Assets Manager offers an end-to-end SaaS solution built on the Esri ArcGIS Utility Network framework — providing a real-time digital twin of your entire infrastructure.

### CLIENT PAIN POINTS

- Disconnected asset records
- Difficulties in maintaining network connectivity data
- Lack of collaboration across departments

### OUR SOLUTION

- Modernize your asset management with a web-based GIS platform
- Create, edit, analyze, and share network data through a unified interface
- Enable full lifecycle tracking of network infrastructure

### DELIVERABLES

- Complete GIS-based network inventory system
- Real-time updates and reporting capabilities
- Integration-ready platform for enterprise systems

### BUSINESS IMPACT

- Greater operational transparency and accuracy
- Faster response to network changes and service demands
- Scalable platform supporting future network growth



# DIGITAL ENABLEMENT & SUPPORT PROGRAMS

## OVERVIEW

Technology is only as powerful as the people who use it. Teklabz ensures your teams are equipped, confident, and supported at every stage of your GIS transformation — from onboarding to long-term operations.

### CLIENT PAIN POINTS

- Lack of internal GIS expertise
- Underutilized platforms and tools
- Dependence on external support for basic tasks

### OUR SOLUTION

- Targeted training programs for end-users, admins, and technical teams
- On-the-job coaching and customized learning paths
- Dedicated support teams available online and on-site

### DELIVERABLES

- Hands-on GIS and PNI system training
- Knowledge transfer and user enablement plans
- Support packages with ticketing, monitoring, and live assistance

### BUSINESS IMPACT

- Increased user adoption and confidence
- Reduced reliance on external consultants
- Improved system efficiency and operational independence



**“DOMAIN-SMART TECHNOLOGY SOLUTIONS”  
BUILT FOR YOUR INDUSTRY’S FUTURE**



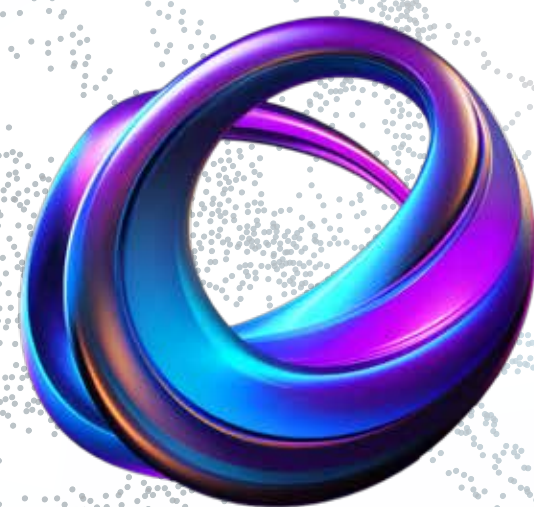
# ABOUT TEKLABZ

Teklabz is a regional leader in GIS-powered solutions for critical infrastructure industries. Since 2009, we've partnered with organizations across Telecommunications, Service Providers, Utilities, Power, AECs, Public Sector, and Defense to modernize and manage their networks with precision, speed, and scale.

As an Esri Global Partner and Ericsson Implementation Partner for PNI, we bring global-grade expertise with local agility. Our 25+ certified GIS professionals specialize in deploying Esri technologies, including ArcGIS Utility Network, to help our clients make faster decisions, reduce costs, and improve service delivery.

# OUR EXPERTISE:

- **Esri Global Partner since 2016**
- **Ericsson Implementation Partner for Network Inventory**
- **Certified GIS professional services provider**
- **Specialists in ArcGIS Utility Network deployment**



**LET'S BUILD SMARTER TELECOM NETWORKS TOGETHER**

START YOUR NETWORK TRANSFORMATION JOURNEY TODAY.



[www.teklabz.com](http://www.teklabz.com)



[LinkedIn.com/company/teklabz](https://www.linkedin.com/company/teklabz)



[sales@teklabz.com](mailto:sales@teklabz.com)